

Artificial Neural Network Based Method to Mitigate Temporary Over-voltages

Iman Sadeghkhani¹, Abbas Ketabi¹, Rene Feuillet²

1- Department of Electrical Engineering, University of Kashan, Kashan, Iran.

Email: sadeghkhani@grad.kashanu.ac.ir, aketabi@kashanu.ac.ir

2- Laboratoire d'Electrotechnique de Grenoble, INPG/ENSIEG, BP46, 38402 Saint Martin d'Hères, Cedex, France.

Email: rene.feuillet@leg.ensieg.inpg.fr

Received: December 2010

Revised: April 2011

Accepted: July 2011

ABSTRACT:

Uncontrolled energization of large power transformers may result in magnetizing inrush current of high amplitude and switching over-voltages. The most effective method for the limitation of the switching over-voltages is controlled switching since the magnitudes of the produced transients are strongly dependent on the closing instants of the switch. We introduce a harmonic index that its minimum value is corresponding to the best-case switching time. Also, this paper presents an Artificial Neural Network (ANN)-based approach to estimate the optimum switching instants for real time applications. In the proposed ANN, second order Levenberg–Marquardt method is used to train the multilayer perceptron. ANN training is performed based on equivalent circuit parameters of the network. Thus, trained ANN is applicable to every studied system. To verify the effectiveness of the proposed index and accuracy of the ANN-based approach, two case studies are presented and demonstrated.

KEYWORDS: Artificial neural networks, Equivalent circuit, Harmonic index, Temporary over-voltages, Inrush currents, Power system restoration, Transformer energization.

1. INTRODUCTION

At a time when bulk power systems operate close to their design limits, the restructuring of the electric power industry has created vulnerability to potential blackouts. Prompt and effective power system restoration is essential for the minimization of downtime and costs to the utility and its customers, which mount rapidly after a system blackout [1,2]. A major process of power system restoration following a blackout would be energization of primary restorative transmission lines in most countries [3]. The energizing process begins by starting black-start generators such as hydro generators or gas turbines, and then charging some pre-defined transmission lines to supply cranking power for large generation plants [4,5]. Then the energization of unloaded transformers would be followed by switching action, and that is an inevitable process of bottom-up restoration strategy. During transformer energization, unexpected over-voltage may happen due to nonlinear interaction between the unloaded transformer and the transmission system [1,2,6]. When a lightly loaded transformer is energized, the initial magnetizing current is generally much larger than the steady-state magnetizing current and often much larger than the rated current of the transformer [7-9]. Controlled switching has been recommended as a

reliable method to reduce switching overvoltage during energization of capacitor banks, transformers, and transmission lines [10]. This technique is the most effective method for the limitation of the switching transients since the magnitudes of the created transients are strongly dependent on the closing instants of the switch [6,11].

The fundamental requirement for all controlled switching applications is the precise definition of the optimum switching instants [11]. This paper presents a novel method for controlled energization of transformers in order to minimize temporary over-voltages. We introduce a harmonic index to determine the best-case switching time. Using numerical algorithm we can find the time that the harmonic index is minimum, i.e., harmonic over-voltages is minimum. Also, for real time applications, this paper presents an Artificial Neural Network (ANN)-based approach to estimate an optimum switching angle during the transformer energization. In the proposed ANN, Levenberg–Marquardt second order method is used to train the multilayer perceptron [12,13]. The proposed ANN is expected to learn many scenarios of operation to give the optimum switching angle in a shortest computational time which is the requirement during online operation of power systems. In the proposed

ANN, we have considered the most important aspects, which influence the inrush currents such as voltage at the transformer bus before switching, equivalent resistance, equivalent inductance, equivalent capacitance, line length, line capacitance, switching angle, and remanent flux. This information will help the operator to select the proper best-case switching condition of transformer to be energized safely with transients appearing safe within the limits.

The paper is organized as follows: in section 2 a brief description of switching over-voltages during restoration is presented. Section 3 presents modelling issues. Section 4 describes the proposed method for best switching condition evaluation. In section 5 the ANN-based approach to estimate the optimum switching angle during transformer energization is illustrated. Two case studies that are a portion of 39-bus New England test system are demonstrated in section 6.

2. SWITCHING OVER-VOLTAGES DURING RESTORATION

One of the major concerns in power system restoration is the occurrence of over-voltages as a result of switching procedures [2]. The major cause of harmonic resonance over-voltages problem is the switching of lightly loaded transformers at the end of transmission lines. After transformer energization, inrush currents with significant harmonic content up to frequencies around ten times of system frequency are produced. The harmonic current components of the same frequency as the system resonance frequencies are amplified in case of parallel resonance, thereby creating higher voltages at the transformer terminals [14]. This leads to a higher level of saturation resulting in higher harmonic components of the inrush current which again results in increased voltages. They may lead to long lasting over-voltages resulting in arrester failures and system faults and prolong system restoration [2]. This can happen particularly in lightly damped systems, common for the beginning of a restoration procedure when a path from a black-start source to a large power plant is being established, and only a few loads are restored yet [1,7,15].

The root cause of this phenomenon is the unfavorable combination of the source impedance, the shunt capacitance of the energized circuits, the non-linear magnetizing characteristics of the energized transformer, inadequate damping of the system and the source voltage phase angle at the moment the transformer is energized. Key factors for the harmonic over-voltages analysis can be listed as follows:

- The resonance frequency of the network;
- The system damping including the network losses, and the load connected to the network;
- The voltage level at the end of the EHV lines;

- The saturation characteristic of the transformers;
- The remanent fluxes in the core of the transformer;
- The closing time of the circuit breaker pole;

3. MODELLING ISSUES

3.1. PSB

Simulations presented in this paper are performed using the PSB. The simulation tool has been developed using state variable approach and runs in the MATLAB/Simulink environment. This program has been compared with other popular simulation packages (EMTP and Pspice) in [16]. The user friendly graphical interfaces of PSB enable faster development for power system transient analysis.

3.2. Generator Model

In [17] generators have been modeled by generalized Park's model that both electrical and mechanical parts are thoroughly modeled, but it has been shown that a simple static generator model containing an ideal voltage source behind the sub-transient inductance in series with the armature winding resistance can be as accurate as the Park model. Thus in this work, generators are represented by the static generator model. Phases of voltage sources are determined by the load flow results.

3.3. Transmission-Line Model

Transmission lines are described by the distributed line model. This model is accurate enough for frequency-dependent dependent parameters, because the positive sequence resistance and inductance are fairly constant up to approximately 1 KHz [18] which cover the frequency range of harmonic over-voltages phenomena.

3.4. Transformer Model

The transformer model takes into account the winding resistances (R_1 , R_2), the leakage inductances (L_1 , L_2) as well as the magnetizing characteristics of the core, which is modeled by a resistance, R_m , simulating the core active losses, and a saturable inductance, L_{sat} . The saturation characteristic is specified as a piecewise linear characteristic [7]. For the target transformer, hysteresis is added, in order to take into account the remanent fluxes in the iron core. The remanent fluxes in the transformer core can be obtained via the integration of the voltages measured on the transformer windings during its disconnection. The correct estimation of the residual flux is extremely important for the success of the controlled switching strategy.

3.5. Load and Shunt Devices Model

All the the loads and shunt devices, such as

capacitors and reactors, are modeled as constant impedances.

4. PROPOSED METHOD FOR BEST SWITCHING CONDITION EVALUATION

The main part of a controlled switching arrangement is a controller, which is the “brain” of the system. It receives the signals from the measuring devices, determines the appropriate reference phase angles and sends the switching commands to each pole of the switching device so that closing operation occurs at the optimum instant.

4.1. Calculation of Transformer inrush Current

In order to analyze the transformer inrush current, let us consider a single-phase transformer having a magnetizing characteristic as given in Fig. 1. If the voltage applied to the transformer is $v = V \cos \omega t$ at the time t_0 for which $\omega t_0 = \theta$, the established flux linkage will be a function of the applied voltage, and the flux linkage offset ψ_0 as given by the following expression [5]:

$$\psi = \frac{V}{\omega} \sin \omega t + \psi_0 \tag{1}$$

The flux linkage offset is made up of the remanent flux linkage ψ_r and the component $-V / \omega \sin \theta$ due to the linkage mismatch condition at energization,

$$\psi_0 = \psi_r - \frac{V}{\omega} \sin \theta \tag{2}$$

Under normal system conditions, the transformer

core would be driven temporarily into saturation asymmetrically when the flux linkage ψ exceeds the saturation level ψ_s . The expression for the inrush current is:

$$i = \frac{1}{L_{sat}} (\psi - \psi_s) \tag{3}$$

Combining (1) to (3), the following expression is obtained for the inrush current (in p.u.):

$$\frac{i}{I_s} = \frac{V}{V_s} \sin \omega t + s - 1 \quad \text{for } \alpha \leq \omega t \leq \pi - \alpha \tag{4}$$

$$= 0 \quad \text{elsewhere}$$

where:

$$\alpha = \sin^{-1} \left[\left(1 - \frac{\psi_0}{\psi_s} \right) \frac{V_s}{V} \right] \tag{5}$$

$$I_s = \frac{V_s}{\omega L_{sat}} \tag{6}$$

$$s = \frac{\psi_0}{\psi_s} \tag{7}$$

Fourier analysis of the inrush current yields the following expressions for its harmonic components:

$$\frac{I_0}{I_s} = \frac{1}{2\pi} [2 \cos \alpha - (2\alpha - \pi) \sin \alpha] \frac{V}{V_s} \tag{8}$$

$$\frac{I_1}{I_s} = \frac{1}{2\pi} [\pi - 2\alpha - \sin 2\alpha] \frac{V}{V_s} \tag{9}$$

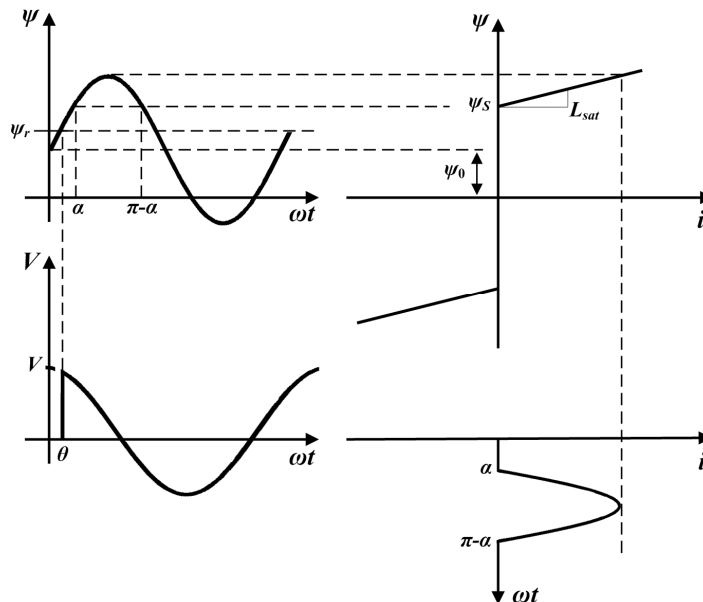


Fig. 1. Simplified transformer magnetization characteristic.

$$\frac{I_k}{I_s} = \frac{1}{k\pi} \left[\frac{\sin[(k-1)(\alpha + \pi/2)]}{k-1} - \frac{\sin[(k+1)(\alpha + \pi/2)]}{k+1} \right] \frac{V}{V_s} \quad (10)$$

$k=2,3,4,\dots$

where ψ_0 is the flux linkage offset, L_s is the transformer saturation inductance, ψ_r is the initial residual flux, and ψ_s and V_s are transformer saturation flux linkage and saturation voltage, respectively.

4.2. Best Switching Condition Determination

Normally for harmonic over-voltages analysis, the best case of the switching condition must be considered which it is a function of switching time, transformer characteristics and its initial flux condition, and impedance characteristics of the switching bus. Using the best switching condition, the harmonic over-voltages peak and duration can be reduced significantly.

In order to determine best-case switching time, the following index is defined as

$$W = \sum_{h=2}^{10} Z_{jj}(h) \cdot I_j(h, t_0, \phi_r) \quad (11)$$

This index can be a definition for the best-case switching condition. Using a numerical algorithm, one can find the switching time for which W is minimal (i.e., harmonic over-voltages is minimal).

The sample system considered for explanation of the proposed methodology is a 400 kV EHV network shown in Fig. 2. The normal peak value of any phase voltage is $400\sqrt{2}/\sqrt{3}$ kV and this value is taken as the base.

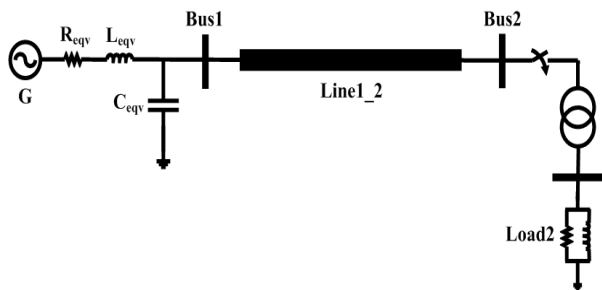


Fig. 2. Sample system for transformer energization study. G: generator, R_{eqv} : equivalent resistance, L_{eqv} : equivalent inductance, and C_{eqv} : equivalent capacitance.

for voltage p.u. In the system studies 400 kV line-to-line base voltage and 100 MVA as a base power is considered.

In this paper, equivalent circuit parameters are used as ANN inputs together other parameters to achieve good generalization capability for trained ANN. In fact, in this approach, ANN is trained just once for sample

system of Fig. 2. Since ANN training is based on equivalent circuit parameters, developed ANN is applicable to every studied system. This issue is better understood in section 6 that trained ANN is tested for a 39-bus New England test system.

Fig. 3 shows the result of the frequency analysis at bus 2. The magnitude of the Thevenin impedance, seen from bus 2, Z_{bus2} shows a parallel resonance peak at 230 Hz. Fig. 4 shows changes of harmonic currents and W index with respect to the switching angle, where k is the harmonic number. Fig. 5 shows the harmonic over-voltages after the transformer energization for the best-case condition (i.e., 56°). For temporary over-voltages, the overvoltage duration has to be taken into account in addition to the amplitude [3]. Table 1 summarizes the results of over-voltages simulation for five different switching conditions that verify the effectiveness of W index.

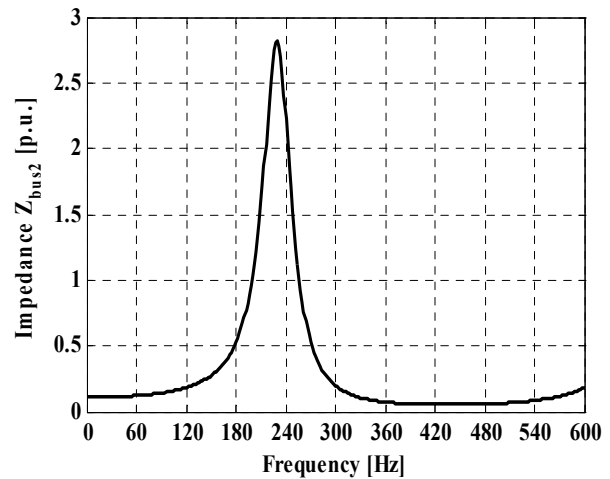


Fig. 3. Impedance at bus 2.

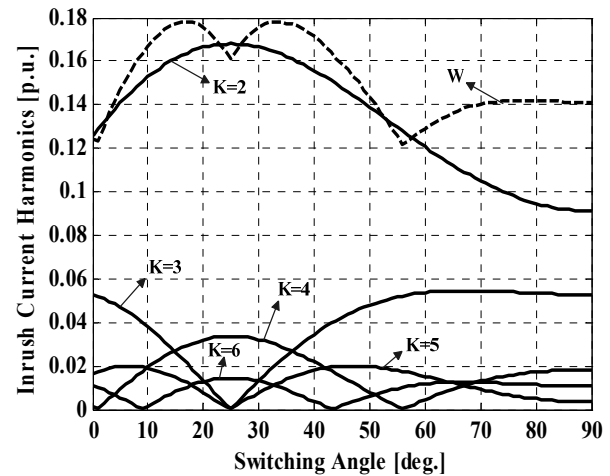


Fig. 4. Changes of harmonic currents and W index with respect to the switching angle.

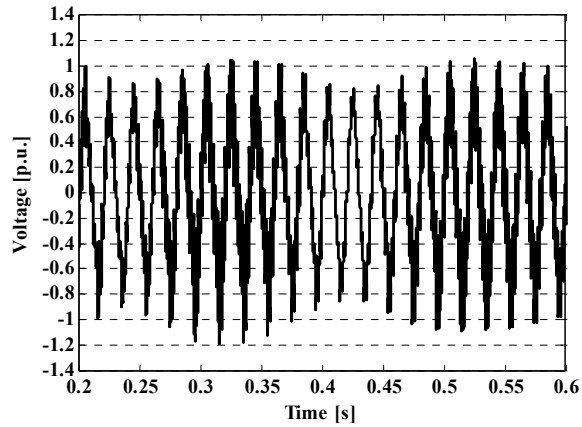


Fig. 5. Voltage at bus 2 after switching of transformer for best switching condition.

Table 1. Effect of Switching Angle on the Minimum of Over-voltages and Duration of $V_{peak} > 1.3$ p.u.

Switching Angle [deg.]	V_{peak} [p.u.]	Duration of ($V_{peak} > 1.3$ p.u.) [s]
56	1.1857	0
45	1.5104	0.3752
33	1.6527	0.4253
70	1.3892	0.1442
10	1.5861	0.3248

In the next section, we present an Artificial Neural Network (ANN)-based approach to estimate the optimum switching angle for the real time applications.

5. THE ARTIFICIAL NEURAL NETWORK

The proposal in this work considers the adoption of feed forward Multilayer Perceptron (MLP) architecture. A MLP trained with the back-propagation algorithm may be viewed as a practical vehicle for performing a nonlinear input–output mapping of a general nature [10,19]. Function approximation by feed forward MLP network is proven to be very efficient, considering various learning strategies like simple back propagation or the robust Levenberg–Marquardt. Its ability to perform well is affected by the chosen training data as well as training scheme.

As mentioned in previous section, following parameters are effective in determination of the optimum switching angle during transformer energization:

- Voltage at transformer bus before switching
- Equivalent resistance of the network
- Equivalent inductance of the network
- Equivalent capacitance of the network
- Line length
- Line capacitance
- Closing time of the circuit breaker poles
- Remanent flux

The schematic diagram of the proposed MLP neural networks architecture is shown in Fig. 6. The composition of the input variables for the proposed neural networks has been carefully selected.

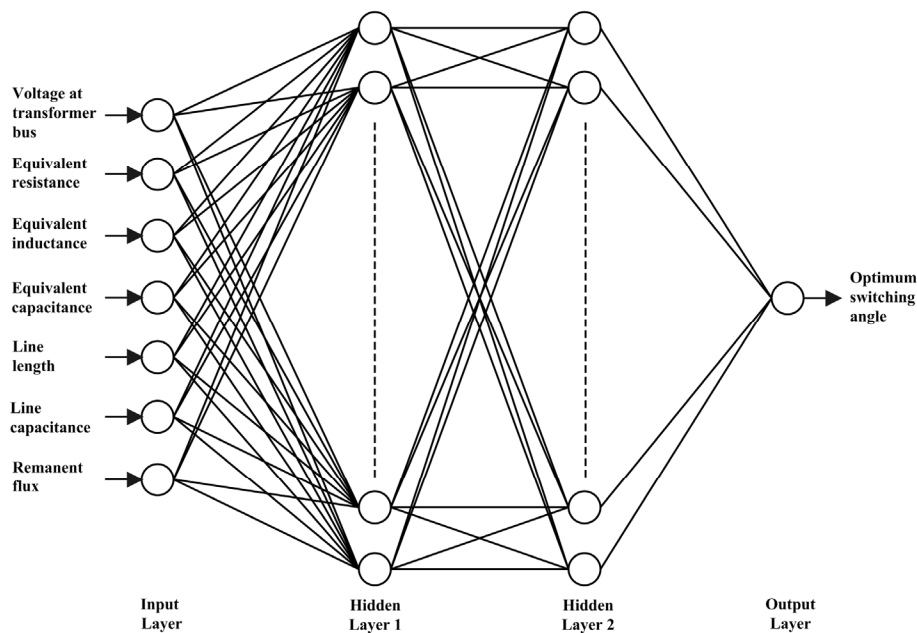


Fig. 6. Proposed MLP-based ANN architecture.

Supervised training of ANN is a usual training paradigm for MLP architecture. Fig. 7 shows the supervised learning of ANN for which input is given to the proposed method to get the optimum switching angle values, and the same data is used to train the ANN. Error is calculated by the difference of proposed method output and ANN output. This error is used to adjust the weight of connection. Output values of the trained neural networks must be capable of computing the optimum switching angle with very good precision. Gradient-based training algorithms, like back propagation, are most commonly used for training procedures. They are not efficient because the fact that the gradient vanishes at the solution. Hessian-based algorithms allow the network to learn more subtle features of a complicated mapping. The training process converges quickly as the solution is approached, because the Hessian does not vanish at the solution. To benefit from the advantages of Hessian based training, we focused on the Levenberg–Marquardt (LM) algorithm reported in [13].

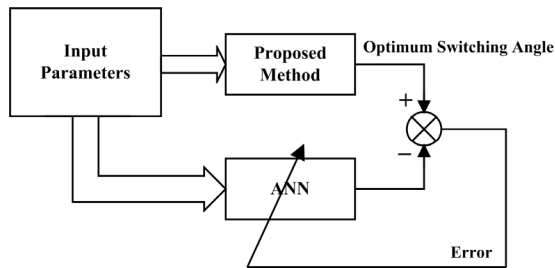


Fig. 7. Supervised learning of ANN.

5.1. Levenberg–Marquardt (LM) Algorithm

Suppose that we have a function $\xi(\mathbf{x})$ which we want to minimize with respect to the parameter vector \mathbf{x} , where

$$\xi(\mathbf{x}) = \sum_{i=1}^N e_i^2(\mathbf{x}) \quad (12)$$

Then the Marquardt–Levenberg modification to the Gauss–Newton method is

$$\Delta \mathbf{x} = [\mathbf{J}^T(\mathbf{x})\mathbf{J}(\mathbf{x}) + \mu \mathbf{I}]^{-1} \mathbf{J}^T(\mathbf{x})\mathbf{e}(\mathbf{x}) \quad (13)$$

The parameter μ is multiplied by some factor β whenever a step would result in an increased $\xi(\mathbf{x})$. When a step reduces $\xi(\mathbf{x})$, μ is divided by β . Notice that when μ is large the algorithm becomes the steepest descent; while for small μ the algorithm becomes Gauss–Newton. The LM algorithm is very efficient when training networks have up to few hundred weights. Although the computational requirements are much higher for the each iteration of the LM algorithm, this is more than made up for by the increased efficiency. This is especially true when high precision is required.

5.2. Steps of Optimum Switching Angle Estimation

The steps for optimum switching angle evaluation and estimation are listed below:

- 1) Determine the characteristics of transformer that must be energized.
- 2) Calculate the $Z_{ii}(h)$ at the transformer bus for $h = 2f_0, \dots, 10f_0$.
- 3) Calculate the best switching condition.
- 4) Repeat the above steps with various system parameters to learn artificial neural network.
- 5) Test artificial neural network with different system parameters.

5.3. Training Artificial Neural Network

All experiments have been repeated for different system parameters. After learning, all parameters of the trained networks have been frozen and then used in the retrieval mode for testing the capabilities of the system on the data not used in learning. The testing data samples have been generated through the proposed method by placing the parameter values not used in learning, by applying different parameters. A large number of testing data have been used to check the proposed solution in the most objective way at practically all possible parameters variation. Percentage error is calculated as:

$$\text{error}(\%) = \frac{|\text{ANN} - \text{Method}|}{\text{Method}} \times 100 \quad (14)$$

Neural network is trained with the goal of mean square error (MSE) $1e-2$. Fig. 8 shows the training of neural network. Results for a sample test data are presented in Table 2.

In the next section, the proposed model tested with portion of 39-bus New England test system.

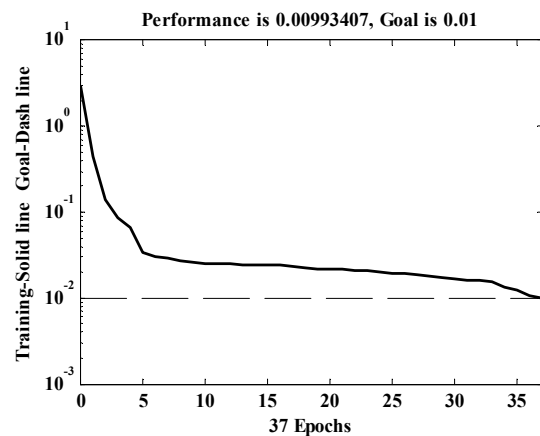


Fig. 8. Squared error against epoch curve.

Table 2. Some Sample Testing Data and Output

V [p.u.]	R _{eqv} [p.u.]	L _{eqv} [p.u.]	C _{eqv} [p.u.]	L.L. [km]	C _{Line} [F/km]	Φ _r [p.u.]	B.S.A. _{HI} [deg.]	B.S.A. _{ANN} [deg.]	Error [%]
0.9077	0.003	0.0375	0.3694	100	1.199e-8	0.1	43.5	44.3	1.8526
0.9254	0.0035	0.035	0.3694	125	1.199e-8	0.2	28.1	28.4	1.1637
0.9731	0.004	0.0325	0.9781	150	1.224e-8	0.3	58.6	56.4	3.8201
0.9973	0.0045	0.03	0.9781	180	1.224e-8	0.3	41.9	42.9	2.2854
1.0426	0.005	0.0275	1.2825	200	1.237e-8	0.4	88.4	86.7	1.9735
1.0621	0.0055	0.0275	1.2825	220	1.237e-8	0.5	75.6	72.3	4.3947
1.1222	0.006	0.025	1.5869	250	1.249e-8	0.6	51.3	50.6	1.3528
1.1224	0.003	0.0225	1.5869	250	1.249e-8	0.7	25.7	26.1	1.6914
1.1668	0.005	0.02	2.1956	265	1.274e-8	0.7	90	89.1	0.9525
1.1824	0.0035	0.02	2.1956	280	1.274e-8	0.8	48.5	49.6	2.3691

V = voltage at transformer bus before switching, R_{eqv} = equivalent resistance, L_{eqv} = equivalent inductance, C_{eqv} = equivalent capacitance, L.L. = line length, C_{Line} = line capacitance, Φ_r = remanent flux, B.S.A._{HI} = the best switching angle obtained by the harmonic index, B.S.A._{ANN} = the best switching angle obtained by the ANN, and Error = switching angle error.

6. CASE STUDY

In this section, the proposed algorithm is demonstrated for two case studies that are a portion of the 39-bus New England test system, which its parameters are listed in [20]. The simulations are undertaken on a single-phase representation.

6.1. Case 1

Fig. 9 shows a one-line diagram of a portion of the 39-bus New England test system which is in the restorative state. The generator at bus 35 is a black-start unit. The load 19 shows cranking power of the later generator that must be restored by the transformer of bus 19. When the transformer is energized, harmonic over-voltages can be produced because the transformer is lightly loaded.

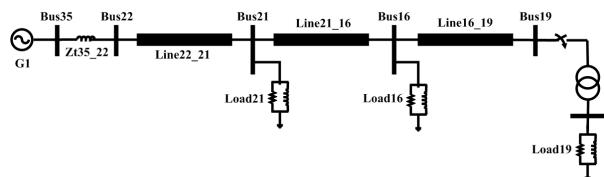


Fig. 9. Studied system for case 1.

As mentioned in the section 4, first, the equivalent circuit of this system, seen behind bus 16, is determined and values of the equivalent resistance, equivalent inductance, and equivalent capacitance are calculated, in other words, this system is converted to equivalent system of Fig. 2. In this case, values of equivalent resistance, equivalent inductance and equivalent capacitance are 0.00291 p.u., 0.02427, and 2.474 p.u., respectively. For testing trained ANN, values of voltage at transformer bus (bus 19), line length, and remanent flux are varied and in each step, optimum switching angle values are calculated from trained ANN and proposed method. Table 3 contains the some sample result of test data of case 1.

6.2. Case 2

As another example, the system in Fig. 10 is examined. In the next step of the restoration, unit at bus 6 must be restarted. In order to provide cranking power for this unit, the transformer at bus 6 should be energized. In this condition, harmonic over-voltages can be produced because the load of the transformer is small.

V [p.u.]	L.L. [km]	Φ _r [p.u.]	B.S.A. _{HI} [deg.]	B.S.A. _{ANN} [deg.]	Error [%]
0.9243	100	0.2	80.6	78.9	2.1675
0.9541	150	0.3	37.5	38.2	1.8044
1.0195	200	0.4	18.3	18.7	2.2783
1.0481	230	0.4	44.8	45.4	1.2459
1.0977	250	0.5	62.1	61.1	1.6623
1.0977	250	0.6	89.7	85.6	4.5391
1.1505	270	0.7	67.7	66.4	1.8542
1.1776	290	0.8	32.6	32.2	1.2658

V = voltage at transformer bus before switching, L.L. = line length, Φ_r = remanent flux, B.S.A._{HI} = the best switching angle obtained by the harmonic index, B.S.A._{ANN} = the best switching angle obtained by the ANN, and Error = switching angle error.

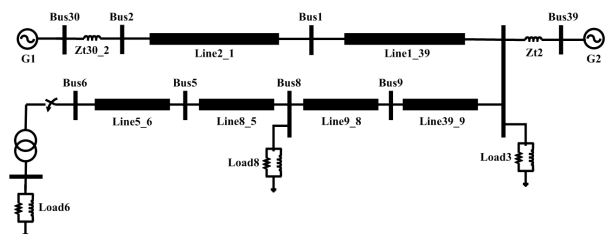


Fig. 10. Studied system for case 2.

After converting this system to the equivalent circuit of Fig. 2, i.e., after calculating equivalent circuit seen from bus 5, various cases of transformer energization are taken into account, count and corresponding optimum switching angles are computed from proposed method and trained ANN. In this case, values of equivalent resistance, equivalent inductance and equivalent capacitance are 0.00577 p.u., 0.02069, and 0.99 p.u., respectively. Summary of few result are presented in Table 4. It can be seen from the results that the ANN can learn the pattern and give results to acceptable accuracy.

Table 4. Case 2 Some Sample Testing Data and Output

V [p.u.]	L.L. [km]	Φ_r [p.u.]	B.S.A. _{HI} [deg.]	B.S.A. _{ANN} [deg.]	Error [%]
0.9335	125	0.8	75.4	73.4	2.6384
0.9512	155	0.7	42.9	41.4	3.5107
0.9906	175	0.6	56.1	57.4	2.3726
0.9906	175	0.5	90	88.3	1.8532
1.0502	215	0.4	82.3	81.1	1.4007
1.0595	225	0.3	29.4	30.6	3.9273
1.1025	240	0.2	45.6	44.8	1.7129
1.1293	265	0.2	51.2	52.4	2.3615

V = voltage at transformer bus before switching, L.L. = line length, Φ_r = remanent flux, B.S.A._{HI} = the best switching angle obtained by the harmonic index, B.S.A._{ANN} = the best switching angle obtained by the ANN, and Error = switching angle error.

REFERENCES

- [1] M.M. Adibi, R.J. Kafka, "Power System Restoration Issues," *IEEE Computer Application in power*, vol. 4, pp.19-24, 1991.
- [2] M.M. Adibi, R.W. Alexander, B. Avramovic, "Overvoltage control during restoration," *IEEE Trans. Power Syst.*, vol. 7, pp. 1464–1470, Nov. 1992.
- [3] A. Ketabi, A.M. Ranjbar, R. Feuillet, "Analysis and Control of Temporary Over-voltages for Automated Restoration Planning," *IEEE Trans. Power Delivery*, vol. 17, pp. 1121–1127, Oct. 2002.
- [4] G. Morin, "Service restoration following a major failure on the hydroquebec power system," *IEEE Trans. Power Delivery*, vol. 2, pp. 454–463, Apr. 1987.
- [5] O. Bourgault, G. Morin, "Analysis of harmonic overvoltage due to transformer saturation following load shedding on hydro-quebec-NYPA 765 kV interconnection," *IEEE Trans. Power Delivery*, vol. 5, pp. 397–405, Jan. 1990.
- [6] I. Sadeghkhani, "Using Artificial Neural Network for Estimation of Switching and Resonance Over-voltages during Bulk Power System Restoration," *M.Sc. Dissertation, Department of Electrical Engineering, University of Kashan*, 2009.
- [7] G. Sybille, M. M. Gavrilovic, J. Belanger, V. Q. Do, "Transformer saturation effects on EHV system over-voltages," *IEEE Trans. Power App. Syst.*, vol. PAS-104, pp. 671–680, Mar. 1985.
- [8] I. Sadeghkhani, A. Ketabi, R. Feuillet, "Estimation of Temporary Over-voltages during Power System Restoration using Artificial Neural Network," in *Proc. 15th International Conference on Intelligent System Applications to Power Systems*, Curitiba, Brazil, Nov. 2009.
- [9] I. Sadeghkhani, A. Ketabi, R. Feuillet, "New Approach to Harmonic Over-voltages Reduction during Transformer Energization via Controlled Switching," in *Proc. 15th International Conference on Intelligent System Applications to Power Systems*,

7. CONCLUSION

This paper describes a new approach to determine the optimum switching instants to reduce harmonic over-voltages due to transformer energization during power system restoration. The proposed method is based on the harmonic index which integrates the key parameters of over-voltages generation. The minimum value of this index is corresponding to the best switching time for the transformer energization. On the other hand, for real time application, the paper presents a procedure for evaluating the best switching condition using an ANN based on Levenberg–Marquardt second order training method. It has been adopted for obtaining small mean square error without losing generalization capability of ANN. Training ANN is based on equivalent circuit parameters to achieve good generalization capability for trained ANN. Simulation results confirm the effectiveness and accuracy of the proposed harmonic index and ANN scheme.

- Curitiba, Brazil, Nov. 2009.
- [10] J.H. Brunke, K.J. Fröhlich, **“Elimination of Transformer Inrush Currents by Controlled Switching–Part I: Theoretical Considerations,”** *IEEE Trans. on Power Delivery*, vol. 16, pp. 276 – 280, April 2001.
- [11] K. Dantas, D. Fernandes, L.A. Neves, B.A. Souza, L. Fonseca, **“Mitigation of switching over-voltages in transmission lines via controlled switching,”** *Power and Energy Society General Meeting–Conversion and Delivery of Electrical Energy in the 21st Century*, 2008 IEEE, 20-24 July 2008, pp. 1-8.
- [12] D. Thukaram, H.P. Khincha, Sulabh Khandelwal, **“Estimation of switching transient peak over-voltages during transmission line energization using artificial neural network,”** *Electric Power System Research*, vol.76, pp. 259–269, 2006.
- [13] M.T. Hagan, M.B. Menhaj, **“Training feedforward networks with the Marquardt algorithm,”** *IEEE Trans. Neural Network*, vol.5, pp. 989-993, Nov. 1994.
- [14] T. Hayashi et al., **“Modeling and simulation of black start and restoration of an electric power system. Results of a questionnaire,”** *Electra*, no. 131, pp. 157–169, July 1990.
- [15] L.H. Fink, K.L. Liou, C.C. Liu, **“From generic restoration actions to specific restoration strategies,”** *IEEE Trans. Power Syst.*, vol. 10, pp. 745–752, May 1995.
- [16] G. Sybille, P. Brunelle, L. Hoang, L. A. Dessaint, K. Al-Haddad, **“Theory and applications of power system blockset, a MATLAB/Simulink-based simulation tool for power systems,”** in *Proc. IEEE Power Eng. Soc. Winter Meeting*, pp. 774–779.
- [17] M.M. Duro, **“Damping Modelling in Transformer Energization Studies for System Restoration: Some Standard Models Compared to Field Measurements,”** in *Proc. IEEE Bucharest Power Tech Conference*, Bucharest, Romania, June 2009.
- [18] P.G. Boliaris, J.M. Prousalidis, N.D. Hatzargyriou, and B. C. Papadias, **“Simulation of long transmission lines energization for black start studies,”** in *Proc. 7th Mediterranean Electrotechn.Conf.*, pp. 1093–1096, 1994.
- [19] S. Haykin, **Neural Network: A Comprehensive Foundation**, 2nd ed., Prentice Hall, 1998.
- [20] S. Wunderlich, M.M. Adibi, R. Fischl, C.O.D. Nwankpa, **“An approach to standing phase angle reduction,”** *IEEE Trans. Power Syst.*, vol. 9, pp. 470–478, Feb. 1994.